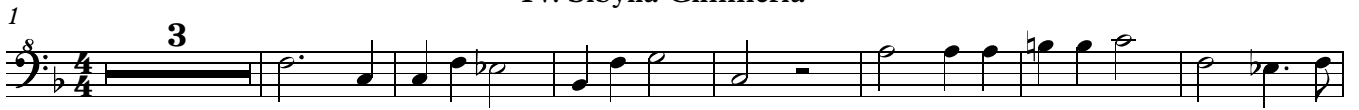






IV. Sibylla Cimmeria

1



Musical staff 1 for Sibylla Cimmeria, starting at measure 1. It features a 4/4 time signature, a key signature of one flat (B-flat), and a triplet of eighth notes in the first measure. The melody consists of quarter and eighth notes.

11



Musical staff 2 for Sibylla Cimmeria, starting at measure 11. It features a 4/4 time signature, a key signature of one flat, and a 3/4 time signature change in the second measure. The melody continues with quarter and eighth notes.

20



Musical staff 3 for Sibylla Cimmeria, starting at measure 20. It features a 4/4 time signature, a key signature of one flat, and a 3/4 time signature change in the second measure. The melody continues with quarter and eighth notes.

28



Musical staff 4 for Sibylla Cimmeria, starting at measure 28. It features a 4/4 time signature, a key signature of one flat, and a 3/4 time signature change in the second measure. The melody continues with quarter and eighth notes.

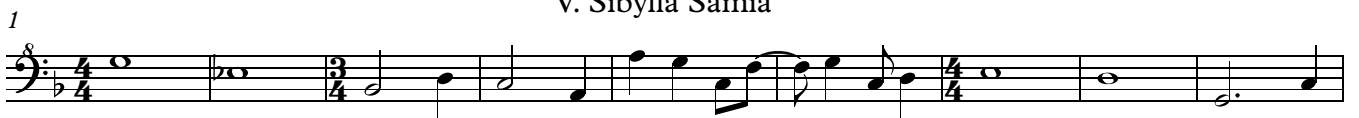
37



Musical staff 5 for Sibylla Cimmeria, starting at measure 37. It features a 4/4 time signature, a key signature of one flat, and a 3/4 time signature change in the second measure. The melody continues with quarter and eighth notes.

V. Sibylla Samia

1



Musical staff 1 for Sibylla Samia, starting at measure 1. It features a 4/4 time signature, a key signature of one flat, and a 3/4 time signature change in the second measure. The melody consists of quarter and eighth notes.

10



Musical staff 2 for Sibylla Samia, starting at measure 10. It features a 4/4 time signature, a key signature of one flat, and a 3/4 time signature change in the second measure. The melody continues with quarter and eighth notes.

18



Musical staff 3 for Sibylla Samia, starting at measure 18. It features a 4/4 time signature, a key signature of one flat, and a 3/4 time signature change in the second measure. The melody continues with quarter and eighth notes.

26



Musical staff 4 for Sibylla Samia, starting at measure 26. It features a 4/4 time signature, a key signature of one flat, and a 3/4 time signature change in the second measure. The melody continues with quarter and eighth notes.

33



Musical staff 5 for Sibylla Samia, starting at measure 33. It features a 4/4 time signature, a key signature of one flat, and a 3/4 time signature change in the second measure. The melody continues with quarter and eighth notes.



VIII. Sibylla Phrygia

1

Musical staff 1 for VIII. Sibylla Phrygia, measures 1-9. The staff is in bass clef with a 4/4 time signature. It begins with a dotted half note G2, followed by quarter notes A2, B2, and C3. A whole note D3 follows, then a half note E3. The next two measures contain quarter notes F3, G3, A3, and B3. The final measure contains a half note C4 and a quarter note B3.

10

Musical staff 2 for VIII. Sibylla Phrygia, measures 10-17. It begins with a quarter rest, followed by quarter notes G2, A2, and B2. A quarter note C3 is followed by a quarter rest. The next two measures contain quarter notes D3, E3, and F3. The final measure contains quarter notes G3, A3, and B3.

18

Musical staff 3 for VIII. Sibylla Phrygia, measures 18-25. It begins with a half note G2, followed by a whole note A2. A quarter rest is followed by quarter notes B2, C3, and D3. The next two measures contain quarter notes E3, F3, and G3. The final measure contains a half note A3 and a quarter note B3.

26

5

Musical staff 4 for VIII. Sibylla Phrygia, measures 26-33. It begins with a whole rest, followed by a whole note G2. A quarter rest is followed by quarter notes A2, B2, and C3. The next two measures contain quarter notes D3, E3, and F3. The final measure contains a half note G3 and a quarter note A3.

34

Musical staff 5 for VIII. Sibylla Phrygia, measures 34-41. It begins with quarter notes G2, A2, and B2. A quarter note C3 is followed by a quarter rest. The next two measures contain quarter notes D3, E3, and F3. The final measure contains a half note G3 and a quarter note A3.

IX. Sibylla Europaea

1

Musical staff 1 for IX. Sibylla Europaea, measures 1-8. The staff is in bass clef with a 4/4 time signature. It begins with a quarter rest, followed by quarter notes G2, A2, and B2. A quarter note C3 is followed by a quarter rest. The next two measures contain quarter notes D3, E3, and F3. The final measure contains a half note G3 and a quarter note A3.

9

Musical staff 2 for IX. Sibylla Europaea, measures 9-16. It begins with a quarter rest, followed by quarter notes G2, A2, and B2. A quarter note C3 is followed by a quarter rest. The next two measures contain quarter notes D3, E3, and F3. The final measure contains a half note G3 and a quarter note A3.

17

Musical staff 3 for IX. Sibylla Europaea, measures 17-24. It begins with a half note G2, followed by a whole note A2. A quarter rest is followed by quarter notes B2, C3, and D3. The next two measures contain quarter notes E3, F3, and G3. The final measure contains a half note A3 and a quarter note B3.

25

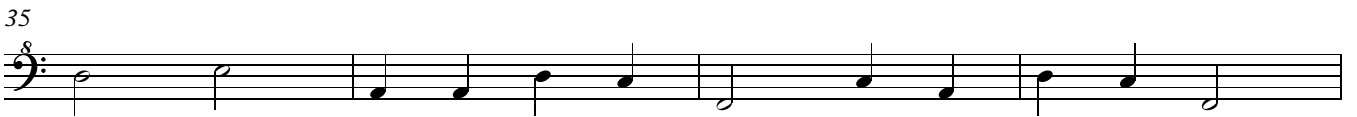
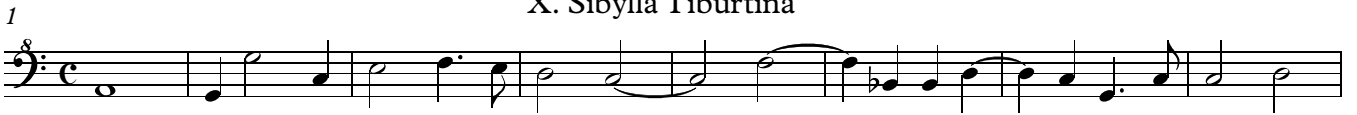
Musical staff 4 for IX. Sibylla Europaea, measures 25-32. It begins with a half note G2, followed by a whole note A2. A quarter rest is followed by quarter notes B2, C3, and D3. The next two measures contain quarter notes E3, F3, and G3. The final measure contains a half note A3 and a quarter note B3.

33

Musical staff 5 for IX. Sibylla Europaea, measures 33-40. It begins with quarter notes G2, A2, and B2. A quarter note C3 is followed by a quarter rest. The next two measures contain quarter notes D3, E3, and F3. The final measure contains a half note G3 and a quarter note A3.

6

X. Sibylla Tiburtina



XI. Sibylla Erythraea



